

DISCOVERING THE SANTA CRUZ'S ISLAND AND ITS CASTLE

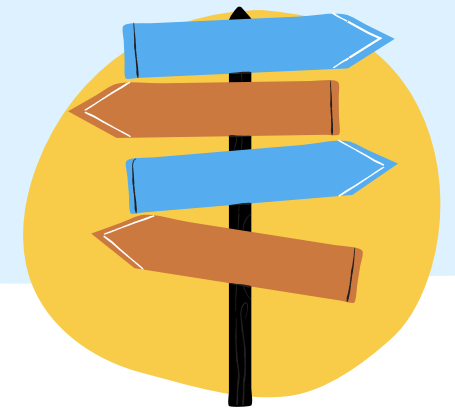
1

Respect, be part of responsible tourism



2

Follow the signs and avoid going off the marked path



3

Respect the natural elements, equally exhibition and decorative too



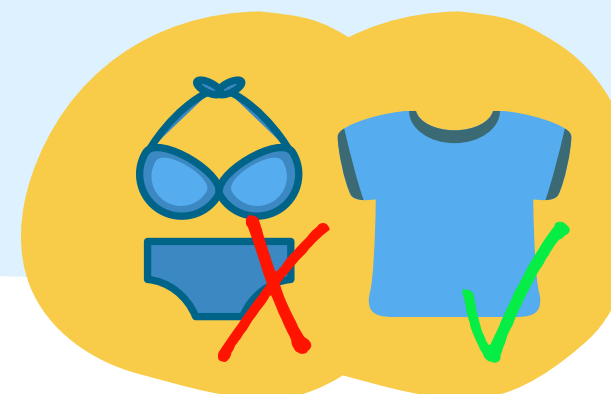
4

Do not throw trash, except in authorized places



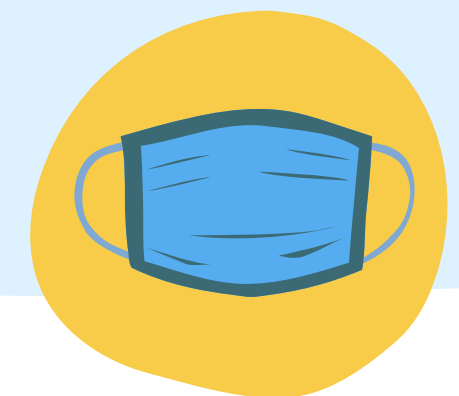
5

Dress respectfully



6

Comply with the rules: keep your distance, put the mask inside and use the gell



THANK YOU FOR YOUR COOPERATION